



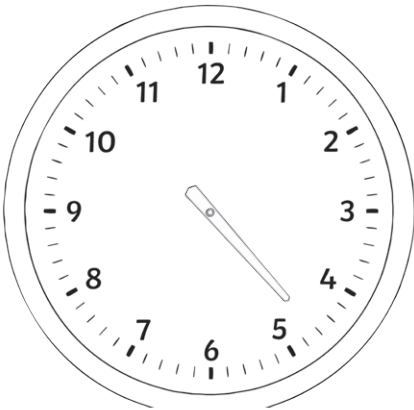
Minutes to the Hour

I can tell and write the time in minutes to the hour.



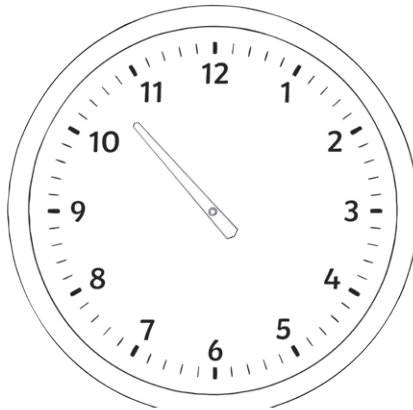
- 1) On each clock, the hour hand has been drawn.
Draw the minute hand to complete each clock.

a)



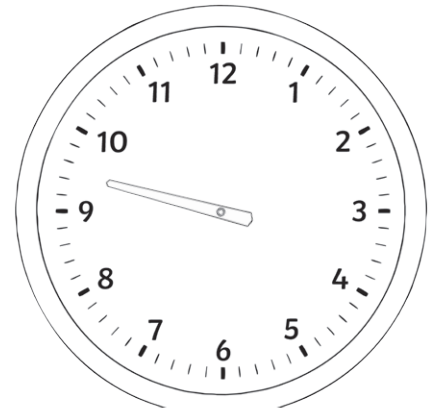
17 minutes to 5

b)



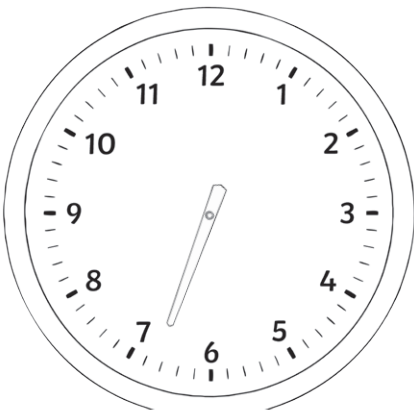
21 minutes to 11

c)



27 minutes to 10

d)

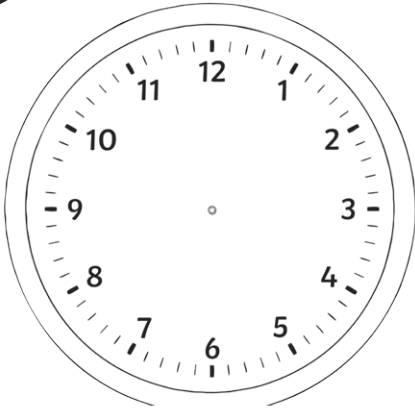


16 minutes to 7



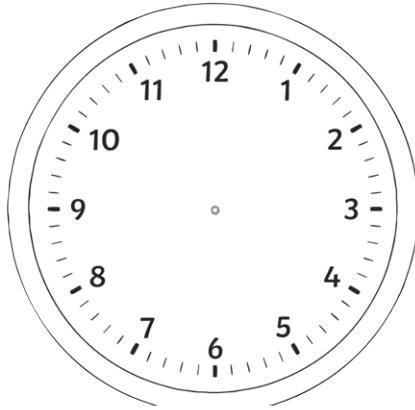
2) Use a ruler to draw both hands on the clock faces to show these times:

a)



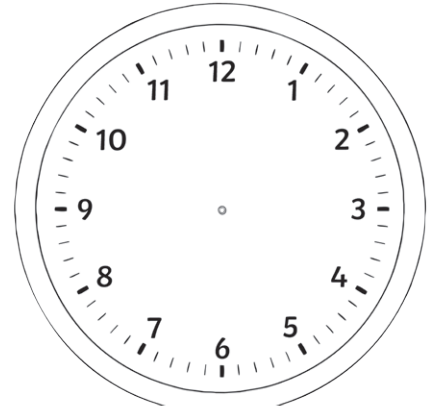
17 minutes to 7

b)



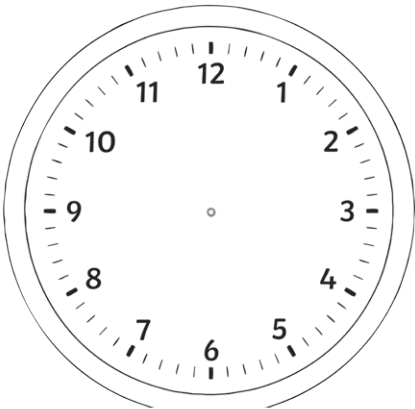
24 minutes to 3

c)



22 minutes to 4

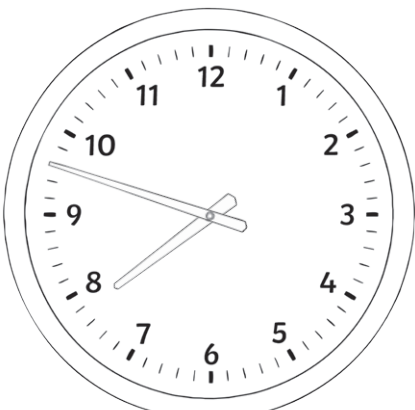
d)



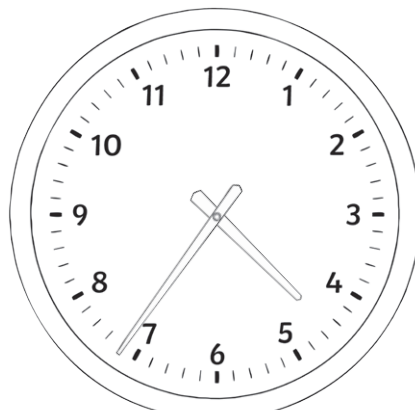
13 minutes to 7

3) Underneath each clock, write the time shown.

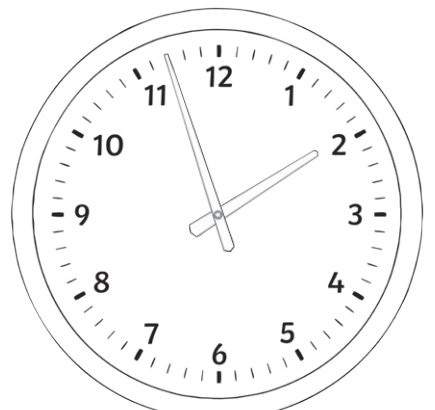
a)



b)

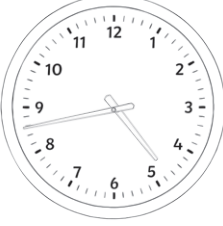
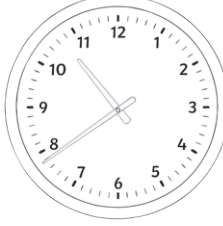




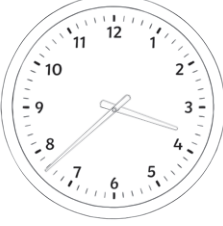
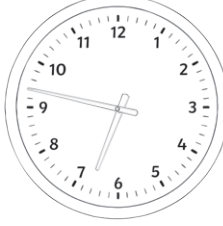


c)





Minutes to the Hour **Answers**

| Question | Answer |
|----------------------------------------------------------------------------------------|-------------------------------------------------------------------------------------------|
| 1. | On each clock, the hour hand has been drawn. Draw the minute hand to complete each clock. |
| a.  | b.  |
| c.  | d.  |
| 2. | Use a ruler to draw both hands on the clock faces to show these times: |
| a.  | b.  |
| c.  | d.  |
| 3. | Underneath each clock, write the time shown. |
| a. <i>12 minutes to 8</i> | |
| b. <i>24 minutes to 5</i> | |
| c. <i>3 minutes to 2</i> | |



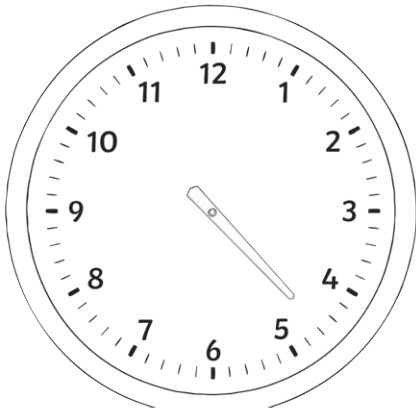
Minutes to the Hour

I can tell and write the time in minutes to the hour.



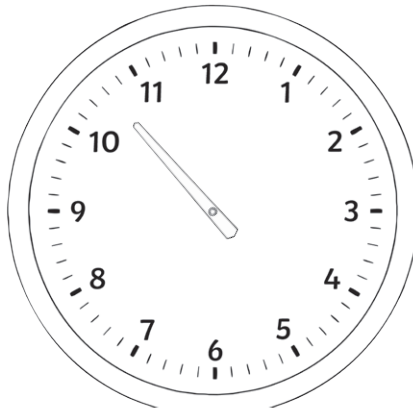
- 1) On each clock, the hour hand has been drawn.
Draw the minute hand to complete each clock.

a)



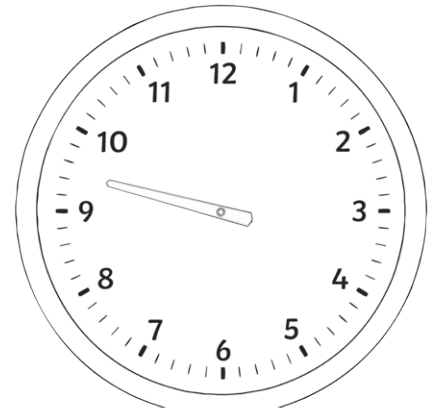
17 minutes to 5

b)



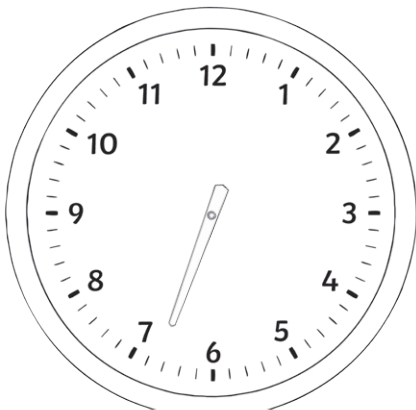
21 minutes to 11

c)



27 minutes to 10

d)

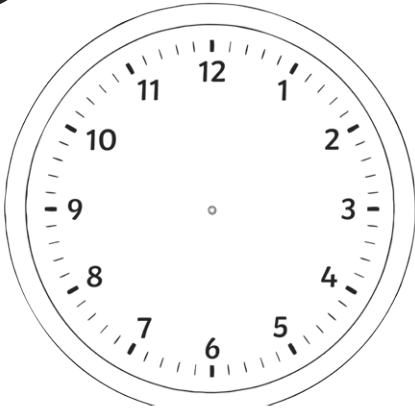


16 minutes to 7



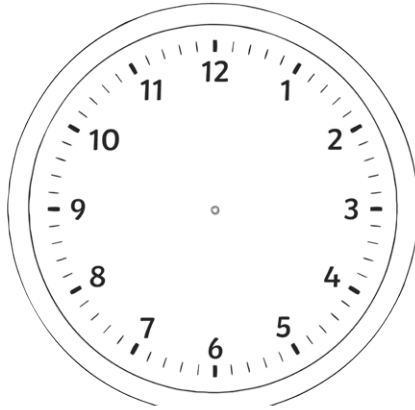
2) Use a ruler to draw both hands on the clock faces to show these times:

a)



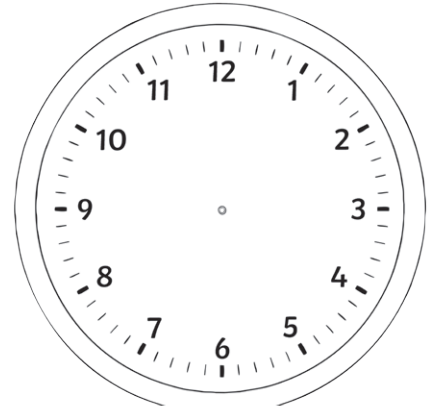
24 minutes to 11

b)



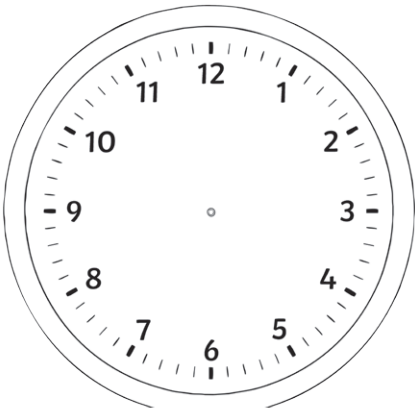
11 minutes to 8

c)



6 minutes to 4

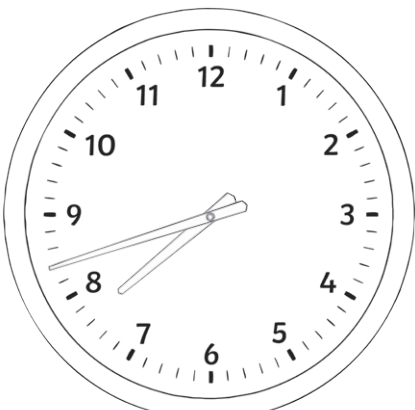
d)



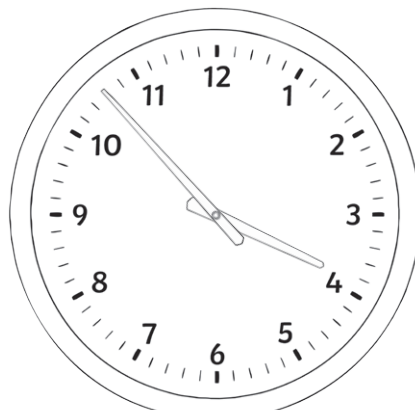
13 minutes to 9

3) Underneath each clock, write the time shown.

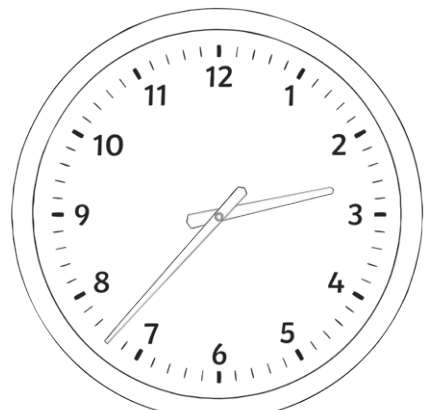
a)



b)



c)





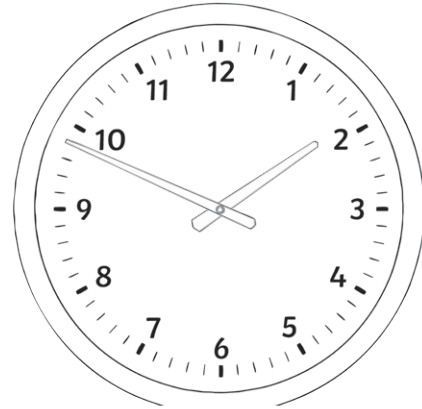
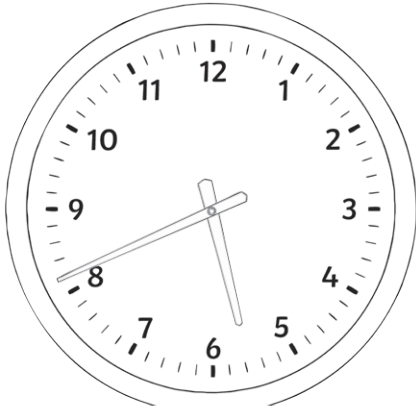
d)



4) Each of the clocks shown are 5 minutes slow. Write the correct time underneath.

a) Clock shows 19 minutes to 6.

b) Clock shows 11 minutes to 2.

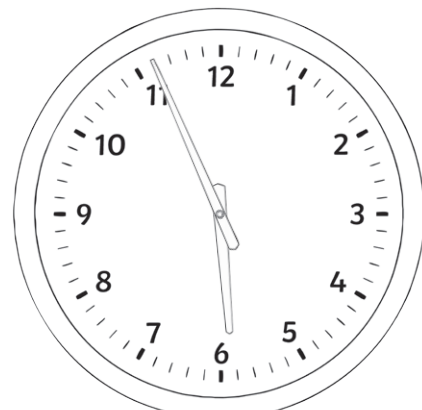
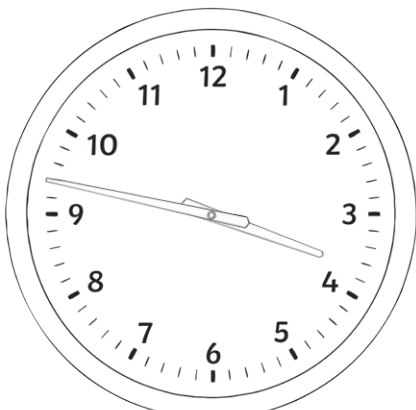


correct time: _____ correct time: _____

5) Each of the clocks shown are 10 minutes fast. Write the correct time underneath.

a) Clock shows 13 minutes to 4.

b) Clock shows 4 minutes to 6.



correct time: _____ correct time: _____





Minutes to the Hour **Answers**

| Question | Answer | | | | |
|-----------|-------------------------------------------------------------------------------------------|-----------|----------------------------------------------|-----------|-----------------------------------------------|
| 1. | On each clock, the hour hand has been drawn. Draw the minute hand to complete each clock. | | | | |
| a. | | b. | | | |
| c. | | d. | | | |
| 2. | Use a ruler to draw both hands on the clock faces to show these times: | | | | |
| a. | | b. | | | |
| c. | | d. | | | |
| 3. | Underneath each clock, write the time shown. | 4. | Each of the clocks shown are 5 minutes slow. | 5. | Each of the clocks shown are 10 minutes fast. |
| a. | 18 minutes to 8 | a. | 14 minutes to 6 | a. | 23 minutes to 4 |
| b. | 7 minutes to 4 | b. | 6 minutes to 2 | b. | 14 minutes to 6 |
| c. | 23 minutes to 3 | | | | |
| d. | 29 minutes to 9 | | | | |



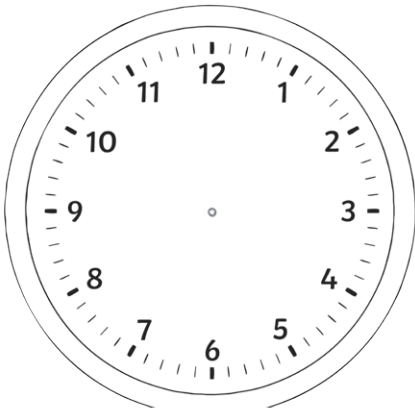
Minutes to the Hour

I can tell and write the time in minutes to the hour.



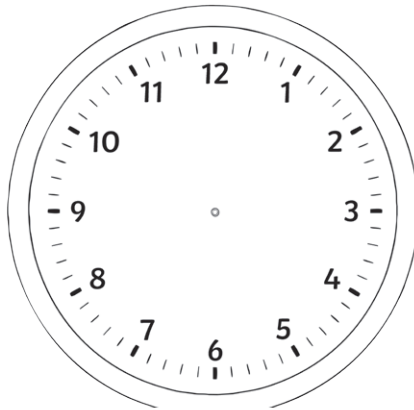
1) Use a ruler to draw the hands on the clock faces to show these times:

a)



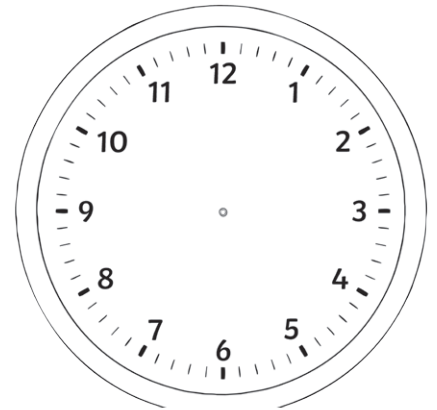
23 minutes to 6

b)



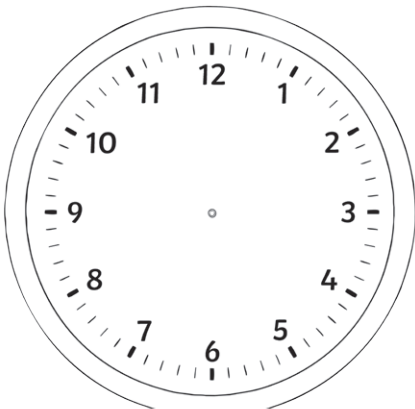
8 minutes to 3

c)



13 minutes to 4

d)

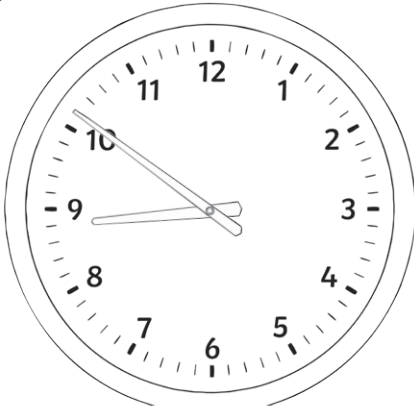


24 minutes to 10

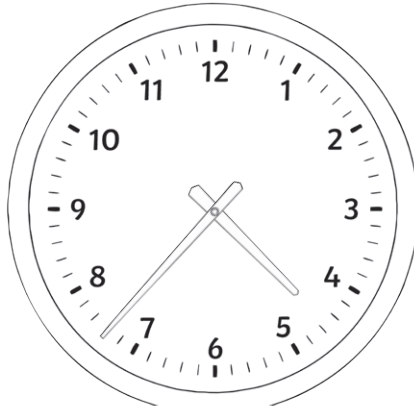


2) Underneath each clock, write the time shown:

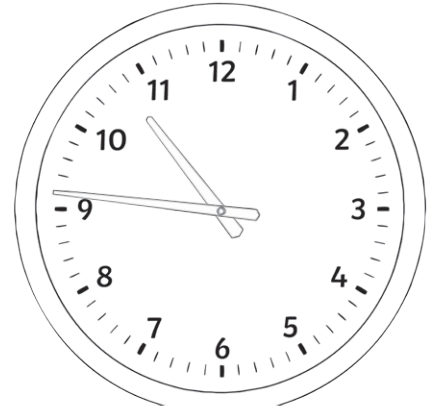
a)



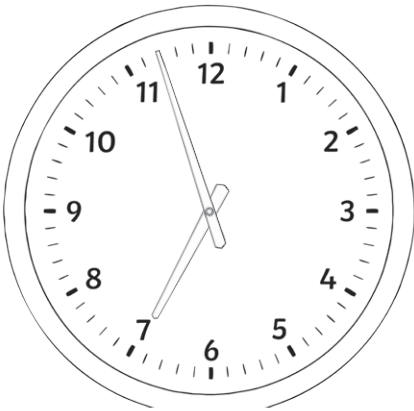
b)



c)

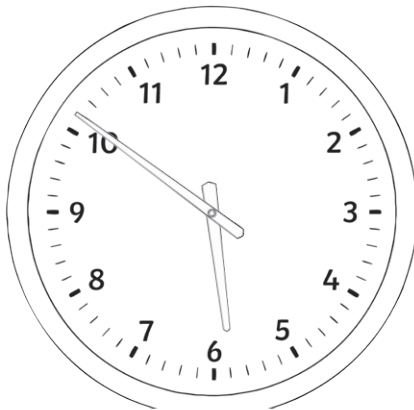


d)

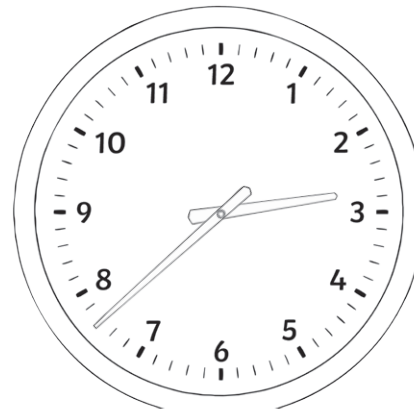


3) Each of the clocks shown are 5 minutes slow. Write the correct time underneath.

a)



b)

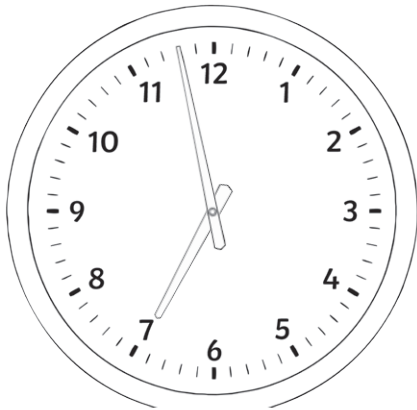


correct time: _____ correct time: _____



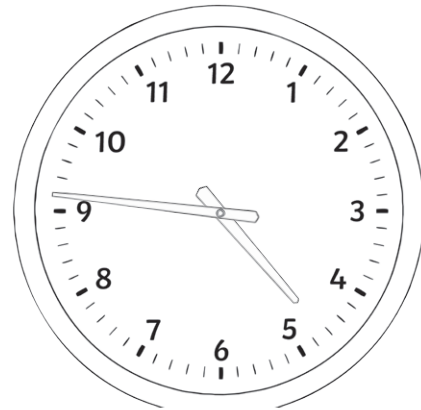
4) Each of the clocks shown are 10 minutes fast. Write the correct time underneath.

a)



correct time: _____

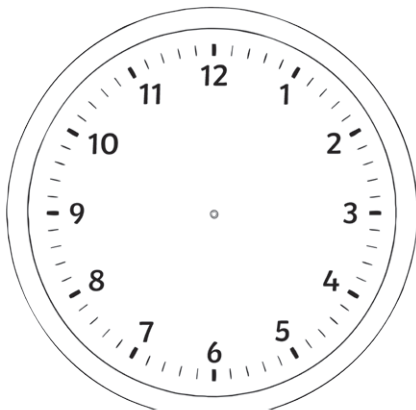
b)



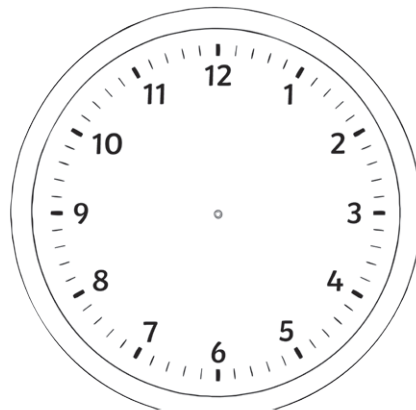
correct time: _____

Draw the time to answer the questions.

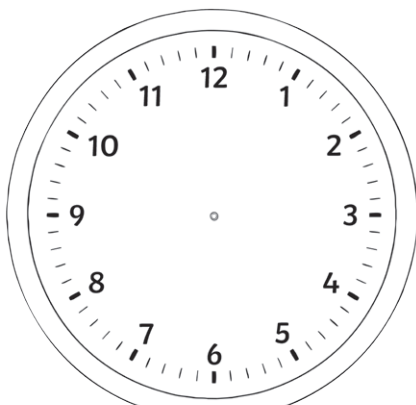
5) At 10 to 12, I set off to my friend's house. It takes me 9 minutes to walk there. What time do I get to my friend's house?



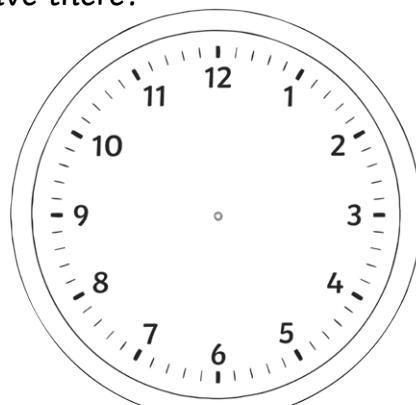
6) At 25 to 8, Spencer gets on a bus to take him into town. The journey lasts 22 minutes. What time does he get off the bus?



7) At 20 to 6, Keenan starts to do his homework. It takes him 16 minutes. What time does he finish his homework?




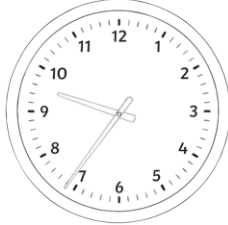


8) My dad picks me up from school at half past 3. He takes me to visit my grandparents. We travel for 19 minutes in the car. What time do we arrive there?









Minutes to the Hour **Answers**

| Question | Answer |
|--------------------------------------------------------------------------------------|----------------------------------------------------------------------------------------|
| 1. | Use a ruler to draw hands on the clock faces to show these times. |
| a.  | b.  |
| c.  | d.  |
| 2. | Underneath each clock, write the time shown: |
| a. | <i>9 minutes to 9</i> |
| b. | <i>23 minutes to 5</i> |
| c. | <i>14 minutes to 11</i> |
| d. | <i>3 minutes to 7</i> |
| 3. | Each of the clocks shown are 5 minutes slow. Write the correct time underneath. |
| a. | <i>4 minutes to 6</i> |
| b. | <i>17 minutes to 3</i> |
| 4. | Each of the clocks shown are 10 minutes fast. Write the correct time underneath. |
| a. | <i>12 minutes to 7</i> |
| b. | <i>24 minutes to 5</i> |



Minutes to the Hour **Answers**

| Question | Answer |
|-------------------------------------------------------------------------------------|------------------------------------------------------------------------------------------------------------------------------------------------------------|
| 5. | At 10 to 12, I set off to my friend's house. It takes me 9 minutes to walk there. What time do I get to my friend's house? |
|  | |
| 6. | At 25 to 8, Spencer gets on a bus to take him into town. The journey lasts 22 minutes. What time does he get off the bus? |
|  | |
| 7. | At 20 to 6, Keenan starts to do his homework. It takes him 16 minutes. What time does he finish his homework? |
|  | |
| 8. | My dad picks me up from school at half past 3. He takes me to visit my grandparents. We travel for 19 minutes in the car. What time do we arrive there? |
|  | |